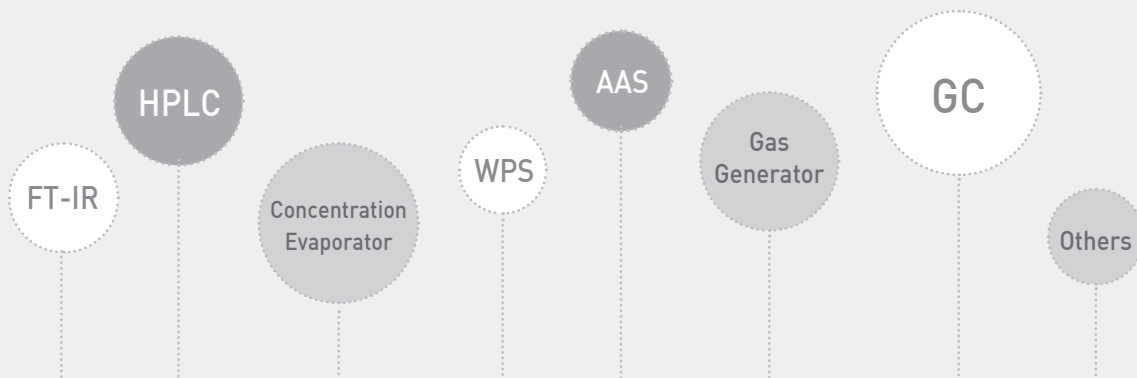




# Total Solutions for Analytical Instruments

*Pharmaceutical / Chemical / Petrochemical /  
Environmental / Polymer / Food & Beverage / Biological*



# YL6500 GC

YL6500 GC provides substantially reliable and precise data by every single part from the stable inlets to the extremely sensitive detectors as well as the innovative haptic touch pad strengthening user interface with a finger-tip. With strongly enhanced APCs (Advanced Pneumatic Control), installation of three units of inlet and detector for each enables to extend the various GC configurations to perform complex analyses. Moreover, an intuitive chromatography data system with user-friendly interface improves the ease of instrument control and a network (LAN) communication speeds up a data process.

## ■ Inlet

- Max. no. of installation: Three
  - Capillary Inlet (Split/Splitless Inlet)
  - Packed Inlet
  - On-Column Inlet(Temperature programming up to 5 steps)

## ■ APC (Advanced Pneumatic Control)

- Increased precision in gas pressure and flow rate for more reliable results
- Automatic compensation for temperature & pressure in installation condition
- Pressure setpoint increment: 0.01 psi
- Pressure stability:  $\pm 0.001$  psi

## ■ Column Oven

- Programming ramp/plateaus: 25/26
- Thermal stability:  $\pm 0.01$  °C
- Temperature program method: Max. 20

## ■ YL-Clarity/Autochro-3000 CDS

- US FDA 21 CFR Part 11 compliance
- Simultaneous data acquisition up to 4 independent chromatographs /12 detectors
- Various analysis method applications
- NGA/SST/Validation kit (Option)

## ■ Detector

- Max. no. of installation: Three
  - FID (Flame Ionization Detector): MDL < 1.5 pg C/sec
  - TCD (Thermal Conductivity Detector): MDL < 2.5 ng/ml
  - $\mu$ TCD (Micro-Thermal Conductivity Detector): MDL < 400 pg/ml
  - ECD (Electron Capture Detector): MDL < 10 fg/sec
  - NPD(Nitrogen Phosphorous Detector): MDL < 0.2 pg N/sec < 0.02 pg P/sec
  - PDD (Pulsed Discharge Detector)
    - (PDHID) MDL: Organic compound < low ppb  
Permanent gas < low ppm
    - (PDECD) MDL:  $10^{-15}$
  - FPD(Flame Photometric Detector): MDL < 1.0 pg S/sec < 0.2 pg P/sec
  - PFPD(Pulsed Flame Photometric Detector)



# Sample Preparation System and Others



## YL3000A Autosampler

YL3000A autosampler with a large, full-color touch screen interface offers both reliability and superior performance with the improved sample and solvent capacity (121 vials (2ml)/60 ml), which means you can get reproducible data more quickly.



## YL3100A Autoinjector

YL3100A is the entry level version of autosampler with the 15 sample capacity. This is an economical solution if you need the high levels of reproducibility that an autosampler gives, but do not run large sample batches.



## YL3200A Autosampler

YL3200A is an automatic liquid autosampler that delivers reliability, flexibility and the highest productivity with 3 unique premium features; Bar code reader, Syringe ID, Top-class sample capacity (209).



## Versa Automated Headspace Vial Sampler

Versa is the perfect solution for applications which require all the advantages of static headspace analysis and is economical to fit any budget.



## HT3 Automated Static and Dynamic Headspace

HT3™ combines Static and Dynamic Headspace analysis techniques into one easy-to-use unit, saving your time, bench space and money while providing increased sensitivity and accurate results.



## YL2000H/2100H Headspace Autosampler

With the static headspace design, YL2000H/2100H utilizes a heated syringe to transfer the samples from the oven directly into the injector and this virtually eliminates sample carry-over to analyze drinking water, waste water, soil (EPA 5021), industrial waste, etc.



## HT280T Headspace, Liquid and SPME Autosampler

HT280T is a single unit combining static headspace analysis, liquid sample injection and SPME (Solid Phase Microextraction). It can save your time and money increasing analysis flexibility.

## Stratum Purge and Trap Concentrator

The Stratum Purge and Trap Concentrator (PTC) is a sample preparation instrument used to remove Volatile Organic Compounds (VOCs) out of aqueous and solid sample types using Helium or Nitrogen.



## AquaTek 100 Waters-only Autosampler

The AQUATek 100 is a Purge and Trap (P&T) Autosampler that automates the sample preparation steps for the analysis of liquid samples via purge and trap. The system is capable of preparing samples such as drinking water and wastewater.



## Atomx Automated VOC Sample Prep System

The Atomx combines an Autosampler and Purge and Trap into a single instrument for the analysis of VOCs in soils and waters. Extractasol clean-up step (patent pending) in the Atomx reduces carryover or cross contamination normally associated with high-level water or soil analysis.



## Gas Sampling Valve

In order to obtain accurate results in gas analysis, it is necessary to equip with gas sampling valves. For the analysis of samples including O<sub>2</sub> and N<sub>2</sub> in very low trace level, a purge housing is very useful to eliminate any possible diffusion from the atmosphere into the valve and safely vent fugitive emissions.



## Pyrolyzer, Pyroprobe 5000 series

Pyrolyzer coupled with YL6500 GC allows you to analyze the samples such as paint, tapes, caulk, adhesives, food packaging, rubber, plastic, papers, ink, coating and a full range of household products without extractions or derivatizations for qualitative and quantitative information.



## Rapid Oven Cooler (ROC)

Rapid Oven Cooler considerably reduces dead time between sequential runs and ensures highly stable GC oven temperatures, down to 20°C, very rapidly to increase lab productivity. Analyzing very volatile compounds, it's strongly recommended to improve significantly high resolution.



# YL9100 HPLC

YL9100 HPLC is built to provide an exceptional cost/performance ratio. Our pumps (YL9110/9111/9112) deliver accurate and precise flow rates to make very stable baseline. The effective temperature control by column compartment (YL9131) ensures retention time reproducibility and reliable data. Also, the innovative optic design of UV/Vis detector (YL9120) enhances light intensity as well as high sensitivity over the entire wavelength range. It is easy to configure YL9100 HPLC depending on a specified application with various detectors, pumps and sample preparation systems.

## Standard Configuration

### ■ YL9101 Vacuum Degasser

- Number of channel: 4 CHs
- Maximum flow rate: 10 ml/min per channel (Analytical)  
50 ml/min per channel (Semi-prep)
- Internal volume per channel  
: 925  $\mu$ l per channel
- Solvent contact materials  
: Teflon<sup>®</sup> AF and PEEK

### ■ YL9110 Quaternary Pump

- Number of solvents: up to 4 solvents
- Gradient formation: 4-channel mixing valve
- Composition precision: < 0.1 %
- Composition accuracy: < 0.5 %
- Flow range: 0.001~10 ml/min (Analytical)  
0.01~50 ml/min (Semi-prep)

\* Binary and isocratic pumps are also available.

### ■ YL9131 Column Compartment

- Temperature range: 4 °C (Cooling) - 90 °C
- Temperature stability:  $\pm$ 0.05 °C
- Temperature programs: 40 steps
- Column capacity: Max. 3 ea of 30 cm column (Analytical)  
Max. 2 ea of 30 cm column (Semi-prep)
- Column switching: Automatic 6-port valve up to 2 ea (Option)

### ■ YL9120 UV/Vis Detector

- Wavelength range: 190~900 nm
- Light source: Deuterium arc lamp & Tungsten lamp
- Linearity: > 99.5% at 2.0 AU (Acetone, 254 nm)
- Noise level: <  $\pm$ 0.35 X 10<sup>-5</sup> AU, 254 nm, dry cell
- Drift: < 1 X 10<sup>-4</sup> AU/hour
- Spectral bandwidth: 5.5 nm
- Dual Wavelength Detection

### ■ YL-Clarity/Autochro-3000 CDS

- US FDA 21 CFR Part 11 compliance
- Simultaneous data acquisition up to 4 independent chromatographs
- Various analysis method applications
- PDA/GPC/SST/Validation Kit (Option)



Isocratic, semi-prep and GPC systems are also available.

## Other Detectors

### ■ YL9160 PDA (Photodiode Array) Detector

- No. of PDA Channel: 1024
- Wavelength: 190~950 nm
- Noise level :  $< \pm 1 \times 10^{-5}$  AU (Empty Cell, 2 sec Time constant, 254 nm)
- Drift :  $< 2 \times 10^{-4}$  AU/hour (Baseline Correction),  $1 \times 10^{-3}$  AU/hour (Room Temp.)
- Confidence in peak purity calculations
- GLP compliance: Photometric Accuracy / Linearity, Noise Level & Drift System Check



### ■ YL9170 RID (Refractive Index Detector)

- Noise:  $\leq 5 \times 10^{-9}$  RIU (Analytical) /  $\leq 10 \times 10^{-8}$  RIU (Semi-prep)
- Differential refractive index
- Economical detector for GPC
- Flow cell volume: 9  $\mu$ l (Analytical) / 7  $\mu$ l (Semi-prep)



### ■ YL9180 ELSD

- More sensitive
- General laboratory

### ■ YL9181 ELSD (Evaporative Light Scattering Detector)

- Highly sensitive
- Advanced research
- Cooling down to 10°C for chamber

- Patented thermo-split: Vapor phase control for optimum sensitivity
- Very low detector volume resulting in the smallest peak within 3 sec
- A single multi-flow, nebulizer for use with micro-bore to semi-preparative flow rates



### ■ ECD (Electrochemical Detector)

- Various application such as biogenic amine, phenol, vitamin, DNA adduct, inorganic ions and amino acids

### ■ FLD (Fluorescence Detector)

- Great accuracy and precision
- Emission monitoring of fluorescence, phosphorescence, and chemiluminescence
- High sensitivity at both lower and higher excitation wavelengths

## YL9300 HPLC

YL9300 HPLC is an integrated HPLC system in a compact design including a vacuum degasser (mixer), quaternary pump and UV/Vis detector at a competitive price. The focus corrected optical design efficiently reduces mobile phase RI effect and provides enhanced baseline stability with a substantially minimized noise level especially in short wavelength range, which brings decreased solvent related peaks.

### ■ Vacuum Degasser

- Number of channel: 4 CHs
- Maximum flow rate: 10 ml/min per channel
- Internal volume per channel: 925  $\mu$ l per channel

### ■ UV/VIS Detector

- Wavelength range: 190~600 nm (Standard)  
190~900 nm (Option)
- Spectral bandwidth: 5 nm
- Wavelength accuracy:  $\pm 1$  nm
- Wavelength precision:  $\pm 0.1$  nm
- Linearity:  $> 99.5\%$  at 2.5 AU (Acetone, 254 nm)
- Noise level:  $< \pm 0.35 \times 10^{-5}$  AU, 254 nm, dry cell
- Drift:  $< 1 \times 10^{-4}$  AU/hour

### ■ Column Compartment

- Temperature range : 4 °C (Cooling) - 90 °C
- Temperature stability :  $\pm 0.05$  °C
- Temperature accuracy :  $\pm 0.5$  °C, with 2-point temp. calibration
- Column capacity : three columns up to 300 mm length (max OD: up to 18 mm)

### ■ Quaternary Pump

- Flow range: 0.001-5 ml/min (Standard)  
0.001-10 ml/min (Option)
- Flow rate accuracy:  $\leq \pm 1\%$  at 1 ml/min
- Flow rate precision:  $< 0.1\%$  RSD at 1 ml/min
- Pressure pulsation:  $\leq \pm 0.5\%$  at 1 ml/min

### ■ System Information

- Data communications: LAN
- Dimensions: 375 X 470 X 545 mm  
(W X H X D)
- Weight: 27 Kg
- Power consumption: 150 W



## Stand-alone Solution



### TP Control Module for YL9100 Series Pump

This pump key controller is for the use of process or a single unit itself. It can control all functions of pump and indicate each factor clearly.

#### Functions

- Method programming
- Solvent mixing rate
- Prime / Purge
- Flow calibration
- Maintenance control
- Pressure zero

#### Features

- 4.2 inch wide, vivid and sensitive LCD touch screen
- Logical instrument monitoring
- Method programming and keeping
- For the use of process / single unit



### SP930D Solvent Delivery Pump

SP930D Solvent Delivery Pump is to be provided for the use of process where requires to supply accurate and precise solvent flow rate as a stand-alone unit. It can also be added to other HPLCs easily and controlled by an intuitive key pad.

- Operating flow range: Analytical 0.001-16.0 ml/min
- Flow precision:  $< \pm 0.1\%$  RSD at 1 ml/min
- Flow accuracy:  $< \pm 1\%$
- Operating pressure: 0-6,000 psi

## HPLC Automation

### YL9150 Autosampler (Alias)

Controllable whole process, from the injection to the analysis report, for your convenience. The compact, stackable design and its economic pricing make this autosampler the best choice for a large variety of HPLC applications.

Injection Range	1 $\mu$ l-9999 $\mu$ l programmable, 1 $\mu$ l increments
Sample Capacity	2 well plates 96 or 384 (deep or shallow); 96 vials (1.5 ml); Option: 24 vials (10 ml)
Injection Precision	RSD for injection volume $> 10\ \mu$ l Full-loop: 0.3 %, Partial-loop: 0.5 %, $\mu$ l-pick-up: 1.0 %
Carry-over	$< 0.05\%$ with standard wash Typically $< 0.01\%$ with extra wash
Sample Cooling and Heating	4~40 $^{\circ}$ C (Option)



## Others

### Column Switching Valve

#### MX Series II™ (Stand-alone)

MX Series II™ automated high-pressure fluidic valves provides productivity enhancing solutions for today's demanding analytical methods. Combine MX Series II modular valves with your current instrument to support complex fluid switching and sample injection needs.

#### TitanHP™

TitanHP™ consists of an integrated driver/actuator and a removable liquid-end (Rapid Replacement Pod™) to provide a single, flexible space-saving design. Eliminating the need for development of an internal board and firmware means shorter product development cycles and reduced time-to-market.

DuraLife® wear surfaces extends valve lifetime, which means reduced field service and more customer analysis time between replacements of the wetted surfaces.

### Rheodyne Manual Injector

- Industrial standard manual injector
- Analytical: 7725i (SUS) and 9725i (PEEK)
- Semi-prep: 3725i



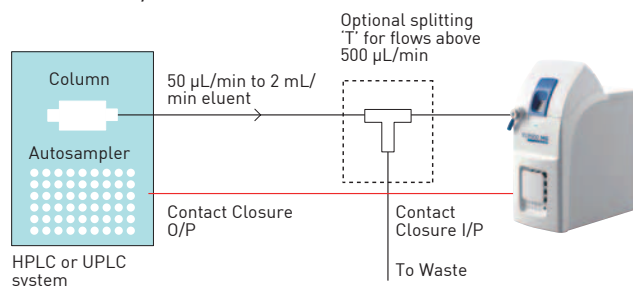
# YL9900L / YL9900S LC/MS

YL9900 MS quickly provides essential information and improves the chemist's workflow. Modern organic labs have become automated, yet real-time mass assays remain just out of reach. YL 9900 MS is the smartest instrument for performing a mass spec solution, if you are a biopharmaceutical company, academic teaching/research lab or any industry requiring mass assays.

## LC or UPLC / MS

A mass detector which can be integrated into existing HPLC and UPLC systems  
Replacing expensive mass spectrometers purchased from another era

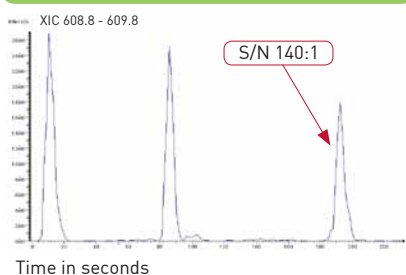
### LC or UPLC/MS



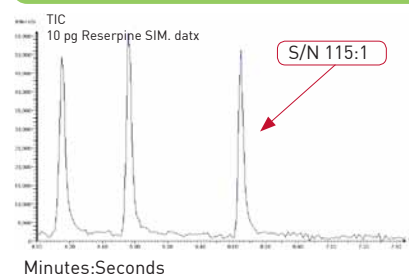
## Sensitivity

You can overcome poor resolution with UV detector or other detectors.  
Selective ion mode gives you a high selectivity for all individual chemicals.

### Sensitivity 100pg Reserpine FIA - Full Scan Mode 100-1000 m/z



### Sensitivity 10pg Reserpine FIA - SIM Mode, 609.28 m/z



- Positive and negative ions analysis
- ESI / APCI (switchable with minimal effort, optional installation)
- The first mass spec which fits in a fume hood with the sash closed
- Easy access to the YL9900 MS :  
10 connectors located on the front of the instrument (8 I/O connectors, USB port and computer connector)
- An easy interface with powerful software  
- Mass Express™, Data Express™
- YL-Clarity both LC and MS with MS Extension only



# WPS (Water Purification System)

Various aquaMAX™ Water Purification Systems have been developed to meet the ideal water quality for your analytical and bioscientific requirements. We provide 4 types of model for each series to satisfy your application.



## aquaMAX™-Basic 360 series

- **The Highest Water Quality**
  - Easy to upgrade by adding R.O Post pack to produce Type II water (ASTM)
  - Auto-rinsing to keep constant water quality
  - Sensing cell to display accurate water quality (Conductivity & Resistivity) by automatic temperature compensation
- **Convenience for Users**
  - One-touch clip type filters: Easy to replace filters by user
  - Monitoring self test, filter replacement, auto-rinsing and service check
  - Separated modules for easy maintenance
- **Safety Function**
  - Pressure regulator to prevent the instrument from damages by constant pressure.
  - Pressure blocking: High and low pressure limit blocking for safe operation.
- **Attractive Price**
  - The higher water quality you get, the lower cost we provide.

## aquaMAX™-Ultra 370 series

- **The Highest Water Quality**
  - aquaMAX™- Ultra produces Type I grade in electrical resistivity  $18.2 \text{ M}\Omega \cdot \text{cm}$  and TOC level less than 10 ppb.
  - The water quality of aquaMAX™- Ultra complies with ASTM, CAP, ACS and NCCLS to be used with HPLC, GC, IC, AAS, ICP and ICP - MS.
- **Resistivity Measurement**
  - Measuring the resistivity by automatic temperature compensation for accurate measurement
  - Easy to select temp. compensation at your fingertips
- **Ultra Pack**
  - Perfect removal of inorganics
- **UF Filter**
  - Reducing Pyrogen to 0.06 Eu/ml. by Polysulphone membrane
- **UV Filter**
  - Significantly low TOC level ( $< 5 \text{ ppb}$ ) for preparation of ultratrace analysis
- **0.2  $\mu\text{m}$  Final Filter**
  - Final filtering of impurities for produced water and prevention of contamination at drain





# AAS 8000 Series (Atomic Absorption Spectrometer)

YL AAS-8000 Series Atomic Absorption Spectrometer has been developed with our accumulated experience in analytical instruments. YL AAS-8000 Series will satisfy all demands by providing excellent performance with reliable and accurate data.



## AAS 8020 Fully Automatic Flame/Graphite Furnace AAS

- Easy switching between Flame and Graphite Furnace

## AAS 8010 Fully Automatic Flame AAS

### Specification

Wavelength Range	190 nm~900 nm	Spectrum Bandwidth	5 steps: 0.1 nm, 0.2 nm, 0.4 nm, 1.0 nm and 2.0 nm, respectively
Grating	1800 lines/mm	Mono-Chromator	Czemy-Tuner Grating Mono-Chromator
Wavelength Repeatability	Full Wavelength $\leq \pm 0.1$ nm	Background Calibration	> 50 times
Blaze Wavelength	250 nm	Accuracy	Full Wavelength $\leq \pm 0.2$ nm
Focal Length	300 mm	Resolution	Better than 0.3 nm

### Features

- Fully controlled by PC
- Automatic wavelength set-up/ Automatic slit switching/ Automatic lamp current and gain set-up within 40 seconds
- Easy button switching and control of 6 lamps on a rolling turret
- Automatic flame ignition/ Automatic flow control for gases and gas leak detection
- Nitrous Oxide Gas/Acetylene Gas selection (Option) to analyze elements under the condition of high temperature
- The use of advanced 1,800 lines/mm grating for strong energy and high resolution
- Compatible with MS Windows OS and user-friendly graphical user interface

### Related Products

- HG 8000 Hydride Generator
- Water Cooling Chamber
- AS-GF Autosampler for Graphite Furnace
- AS-F Autosampler for Flame

# YL TOC Analyzer

YL TOC Analyzers are designed for analysis of Total Organic Carbon and enables the analysis of a wide range of samples such as waste water, ultra pure water, drinking water, Brines, etc in high performance. The integrated autosampler helps to reduce experiment time for auto-dilution and auto-calibration. The auto-dilution has the ability to meet individual analytical needs due to pre-set ranges and the auto-calibration eliminates the need for multiple manual calibration standard concentration levels. The SPC-NDIR performs the high sensitivity measurement of organic substances.



## Torch

### Features

- Oxidation by Combustion : From 680~1000 °C
- Smaller, more rugged combustion tube design
- Simultaneous Carbon and Nitrogen analysis
- **Detection level**
  - TOC: 50ppb~30,000ppm, TN: 50 ppb~2000 ppm
- **Precision**
  - TC :  $\leq 1.5 \% \pm 15$  ppb RSD, TN : 3 % RSD
- **Analytical Modes**
  - TC, IC, TOC, TC-IC, option: TN
- **Integrated Autosampler** (with mixing option)
  - Intellidilution / Auto-calibration
  - 75 vial Mixing at 40 ml (Standard), Option: 90 vials at 55ml, 120 vials at 125 ml, 4 center stock position 125ml
- **Application**
  - Environment - Waste water, Industrial waste effluents, Ground Surface water, Brines

## Fusion

- **Oxidation Method**
  - Photochemical Oxidation by UV-Persulfate
- **Detection level:** 0.2 ppb~4000 ppm
- **Precision:** 1% RSD or +/- 2ppb  
(RSD=Relative Standard Deviation)
- **Analytical Modes**
  - TC, IC, TOC, TC-IC
- **Integrated Autosampler**
  - Intellidilution / Auto-calibration
  - 120 vials at 20ml
  - 75 vials at 40 ml
  - 90 vials at 55ml
  - 4 center stock position 125ml
- **Carryover**
  - < 1%cross contamination
- **Application**
  - Pharmaceutical - Cleaning validation, Water for Injection, Ultra pure water

### Detector

- Non-Dispersive Infrared (NDIR) with Static Pressure Concentration(SPC)-Patent Pending
- Increased sensitivity and precision
- Elimination of the inherent error that is associated with time delays between integrations included with traditional flow-through technology
- Solid State Detector - no moving parts compared to traditional NDIR detectors



# FT-IR (Fourier Transform Infrared Spectrometer)

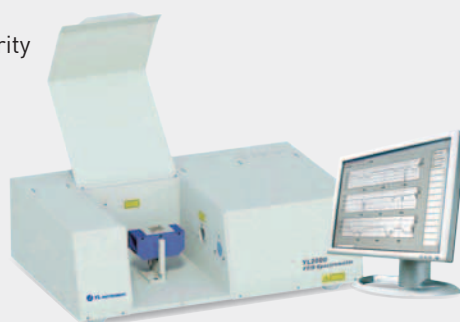
YL FT-IR Series brings both high performance and cost efficiency. With a sophisticated interferometer design, YL FT-IR Series delivers reliable and reproducible data ensuring excellent and stable light source.

## Features

- No interference of humidity by a desiccated and sealed interferometer
- Stable wavelength emission by air cooled infrared sources
- Self compensating alignment at an optical system
- Ease of use with an intuitive software
- DLATGS Detector with high sensitivity and excellent linearity

## Applications

- Polymer analysis
- Foods research
- Quality assurance and control
- Pharmaceutical research
- Lubricant formulation and fuel additives
- Environmental and water quality analysis methods
- Biochemical and biomedical research
- Education analysis



YL2000 FT-IR



YL2300 FT-IR (Portable)

## Specifications

	YL2000 FT-IR	YL2300 FT-IR
Wavelength Range, IR	7800 to 380 $\text{cm}^{-1}$	7000 to 400 $\text{cm}^{-1}$ (without ATR accessory)
Wavelength Range, NIR	15000 to 3850 $\text{cm}^{-1}$	15000 to 3850 $\text{cm}^{-1}$
Spectral Resolution (Standard)	1 $\text{cm}^{-1}$ (8 $\text{cm}^{-1}$ - NIR)	2 $\text{cm}^{-1}$ (8 $\text{cm}^{-1}$ - NIR)
Spectral Resolution (Option)	0.5 $\text{cm}^{-1}$	1.0 or 0.5 $\text{cm}^{-1}$
Interferometer	Self aligning	Self aligning
Beamsplitter, Standard IR	Multicoated KBr	Multicoated KBr
Frequency Reference	VCSEL laser	VCSEL laser
Detector, IR Standard	Low noise DLATGS	Low noise DLATGS
Detector, IR Option	MCT	-

# Gas Generator

YL Instruments provides gas generators for the use of your appropriate application where require high purity gases securing your safety, improving lab efficiency as well as ensuring superior results at a economical price

## Nitrogen Generator



Mistral EVO Series



High Purity Series

## Hydrogen Generator



NM-H2 plus Series



PG-H2 plus Series

## Zero Air Generator



Zero Air GC Series



Ultra Zero Air GT Series

# Concentration Evaporator

YL Concentration Evaporators are microprocessor-controlled evaporation systems for simultaneous and automated concentration of multiple samples with unattended operation, convenience, high speed and economical cost.



Hurricane-EX



Hurricane-Elcap



Windy-i



Windy-R

## World Wide Distributor

Algeria	<b>SINAL sarl. Group</b> Tel: 00 213 41 414 253 e-mail: a.bekt@sinaldz.com	Hungary	<b>Edison House Holding Zrt.</b> Tel: +36 29 562 020 e-mail: info@edisonhouse.hu <b>Today Science Kft.</b> Tel/Fax: +36 23 357 036 e-mail: robert.pal@today.hu	Nigeria	<b>INSTERTECK</b> Tel: 062 232 808 e-mail: instertit@yahoo.com
Argentina	<b>Lab Solutions SRL</b> Tel: +54-11-4542-4911 e-mail: ariel.ciarlo@labsolutions.com.ar	India	<b>PG TECH PVT. LTD.</b> Rajasthan, Madhya Pradesh, Uttar Pradesh, Chhattisgarh Tel: 91-98260-42410 e-mail: info@pgtech.in <b>Samarth Instruments</b> Gujarat, Maharashtra, Goa Tel/Fax: 91-265-2357609 e-mail: samarthibrd@sisfy.com <b>Orange Bio Science Products Pvt. Ltd.</b> Bihar, Jharkhand, West Bengal, Orissa Tel: 91-33-24191876 e-mail: info@orangebioscience.com <b>MSP Lab Instrument</b> Andhra Pradesh, Telangana, Karnataka, Tamil Nadu, Kerala Tel: 91-40-3077763 e-mail: msplabinstruments@gmail.com <b>Rions India</b> Non Exclusive for WPS Tel: 91 11 23233295 e-mail: rions@vsnl.net	Panama/Cuba	<b>Nova Sep / KAIA B.I. S.A</b> Tel: 507-203-2244 e-mail: asti@enet.cu
Australia/ New Zealand	<b>Thomson Group Pty Ltd.</b> Tel: +61 (0)2 9526 8199 Fax: +61 (0)2 9526 8299 email:paul.t@thomsongroup.com.au	Indonesia	<b>PT Trikarsa Inc</b> Tel: +62 21 4755877 e-mail: soniss@trikarsa.co.id	Poland	<b>Tlab Technika Laboratoryjna</b> Tel: +48 22 435 81 02 e-mail: jaroczajka@wp.pl
Bangladesh	<b>Analytica Science &amp; Technology Ltd</b> Tel:+88027175845 e-mail: ed@astl.com.bd	Iran	<b>Kimia Sanat Jahan Company</b> Tel: 98 21 2290 1482 e-mail: info@kimiacon.net	Portugal	<b>Cromolab, Lda.</b> Telephone: +351 214 182 142 e-mail: info@cromolab.pt
Brazil	<b>Allcrom</b> Tel: (11)3464 8900 e-mail: allcrom@allcrom.com.br	Iraq	<b>Anwar Al-Raazi Co. Ltd.</b> Tel: +964 7801874981 e-mail: alaa.spectro@gmail.com	Romania	<b>NITECH srl</b> Tel: 40724239328 e-mail: adrian_barbu@nitech.ro
Bulgaria	<b>ELTA 90M Ltd.</b> Tel: +359 2 983 96 49 Fax: +359 2 983 22 11 email: office@elta90.eu Homepage : www.elta90.com	Israel	<b>BioAnalytics</b> Tel: +972-5-44237153 e-mail: dani@bioanalytics.co.il	Russia (Moscow)	<b>ChimAnalytPribor, Ltd</b> Tel: +7 (499) 703-0246 e-mail: vanova@chimanalytpribor.ru
Canada/Moroco	<b>Zef Scientific</b> Tel: 514-685-1544 e-mail: natalya@zefsci.com	Italy	<b>EsseCi Group s.r.l.</b> Tel: 031/48.19.19 e-mail: info@esscigroup.it	Russia (Vladivostok)	<b>Dallanalit Co. Ltd</b> Tel: +7 4232 700 587 e-mail: Kovashnatalia@yahoo.com
Chile	<b>ESPECTRO CIENCIA</b> Tel: (56-2) 310 53 70 e-mail: adroguett@espectrociencia.cl	Japan	<b>LC Science Co., Ltd.</b> Tel: +81-743-64-2860 e-mail: s.hishikawa@lc-s.co.jp	Saudi	<b>K.I Abdulkadir &amp; Partners. (KIAK)</b> Tel: +966 92 0005425 e-mail: turki.saeed@kiaksa.com
Colombia	<b>GRUPO ALIANZA ESTRATEGICA GAE LTDA.</b> Tel: (571) 2022632 e-mail: cesar.marino@gaeltlda.com	Kazakhstan	<b>LaborPharma Ltd.</b> Tel: 7-327-258-35-85 e-mail: info@labtorg.kz	South Africa	<b>Trilab Support</b> Tel: 27-031-700 6050 e-mail: simon.hunter@trilab.co.za
Czech Republic	<b>LABICOM s.r.o.</b> Tel/Fax: +420 585436915 e-mail: vera.tatarkovicova@labicom.cz	Kenya	<b>Faram E. A. Limited</b> Tel: + 2540204453341 e-mail: tenders@faram-ea.com	Spain	<b>Micron Analitica S.A.</b> Tel: 91 413 11 82 Fax: 91 413 22 90 e-mail: carlos-micron@auna.com
Denmark	<b>MD Scientific ApS</b> Tel: +45 7027 8565 e-mail: marekd@md-scientific.dk	Latvia	<b>Faneks Ltd.</b> Tel: 371-7334646 e-mail: viktors@faneks.lv	Sudan	<b>El walideen Trade and Investment CO</b> Tel: +249183764737 e-mail: fakhreldin2006@yahoo.com
Ecuador	<b>InstrulabQ</b> Tel: 593 2 3520 340 e-mail: malsongarcia@instrulabq.com <b>ELICROM CIA. LTDA.</b> Tel: 593 4-2282007 Ext. 401 e-mail: elicrom@elicrom.com	Malaysia	<b>Analisa Resources</b> Tel: 603-7880-6217 e-mail: lthang@analisa-scientific.com	Switzerland	<b>TecDev</b> Tel: 41 24 435 2202 e-mail: tecdev@swissonline.ch
Egypt	<b>Peak Scientific Instruments S.A.E.</b> Tel: 2-02-226-15413 e-mail: psisae@link.net	Mexico	<b>Soluciones en Instrumentacion, S.A. de C.V.</b> Tel: +52 (81) 8378 4041 Fax: +52 (81) 8378 4041 email: rodrifo@solinsa.mx	Taiwan	<b>Vastech Scientific</b> Tel: 886-2-2550-9431 e-mail: Thomas@vastech.com.tw
France	<b>Tecora</b> Tel: +33 (0)1 48 75 82 86 e-mail: sylvie.chami@tecora.com			Thailand	<b>Fortune Scientific Co., Ltd.</b> Tel: 662-986-1250-4 Fax: 662-986-1255 and 662-986-1243 email: watcharin@fortunesci.com
Germany	<b>Techlab GmbH</b> Tel: 05305/930205 e-mail: roepke@techlab.de			Tunisia	<b>Analytica</b> Tel/Fax: (216) 70 559 098 e-mail: analytica@planet.tn
Greece	<b>Metro Lab</b> Tel: 30-210-646 8840 e-mail: pkapetis@metrolab.gr			Turkey	<b>Pro Analytik LTD STI</b> Tel: 90 - 212 - 544 8222 e-mail: tuncay@proanalitik.com

## History

- 1988 AquaPuri 312 Laboratory Water Purification System
- 1989 Launching of First HPLC
- 1991 Launching of First GC
- 1998 Acquired EM [Excellent Machine, Material, Mechanism] Mark for 600D GC
- 1999 Award for Advanced Technology from Korea Chemical Society  
Received Presidential Award for New Technology & Practice for 600D GC from Ministry of CIE
- 2000 Certified for ISO 9001 Quality Assurance System
- 2001 Acquired CE Mark for HPLC
- 2002 Acquired NT Mark for Advanced Pneumatic Control of Acme 6000 GC
- 2004 Acme6000 GC selected as one of Top Quality Products from Supply Administration Republic of Korea
- 2005 Pattern Approval Certificate of the Measuring Instruments of China for Acme 9000 HPLC
- 2006 Launching of YL6100 GC / New WPS / Autochro-3000 Data System / AAS
- 2007 Acquired CE Mark for GC, AAS & New WPS
- 2008 Launching of YL9100 HPLC & YL-Clarity Chromatography Data System
- 2009 Acquired CE Mark for YL9100 HPLC
- 2011 Launching of YL FT-IR / Gas Generator / Concentration Evaporator  
Launching of YL6500 GC
- 2012 Launching of YL9300 HPLC
- 2013 Launching of YL9900 LC/MS



**YL INSTRUMENT CO., LTD.**

The iDEA makes iDEAL! KOREA MADE

Young Lin Bldg., 899-6, Hogue-dong, Anyang, 431-836, Korea

TEL: 82-31-428-8700 / FAX: 82-31-428-8779

E-mail: export@younglin.com

Homepage: : www.younglin.com



These Products are manufactured by Young Lin  
ISO 9001-certified facility that is periodically audited by the  
registering body to ensure compliance