



## APPLICATION NOTE

### Subject : Analysis of Catecholamine among the Plasma

#### ▶ Analysis condition

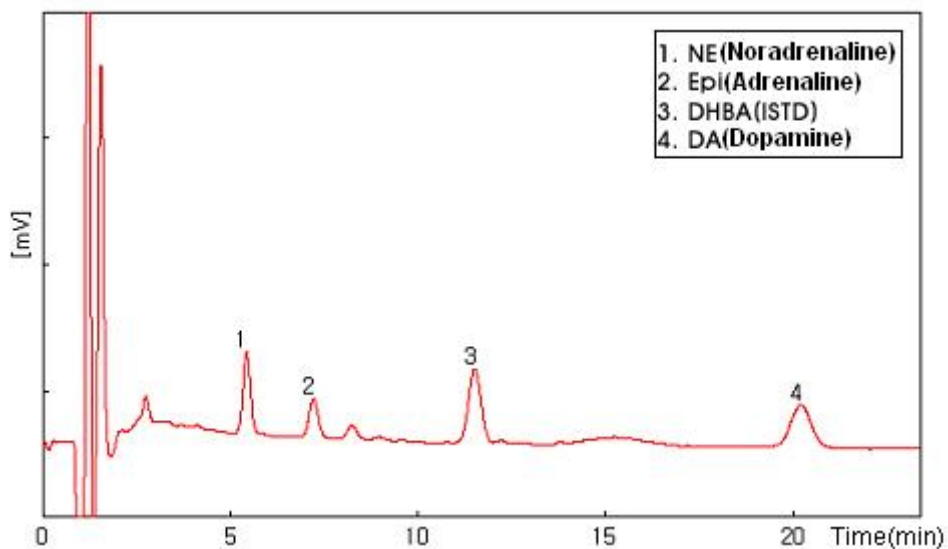
Mobile phase : The mobile phase made by Chromsystem

Flow rate : 1.3 ml/min

ECD condition : +500mV

Sample injection : 20uL

#### ▶ Chromatogram



영린기기

431-836 경기도 안양시 동안구 호계2동 899-6 Tel : 031-428-8700 Fax : 031-428-8787  
Homepage : [www.younglin.com](http://www.younglin.com) E-mail : [sales@younglin.com](mailto:sales@younglin.com)