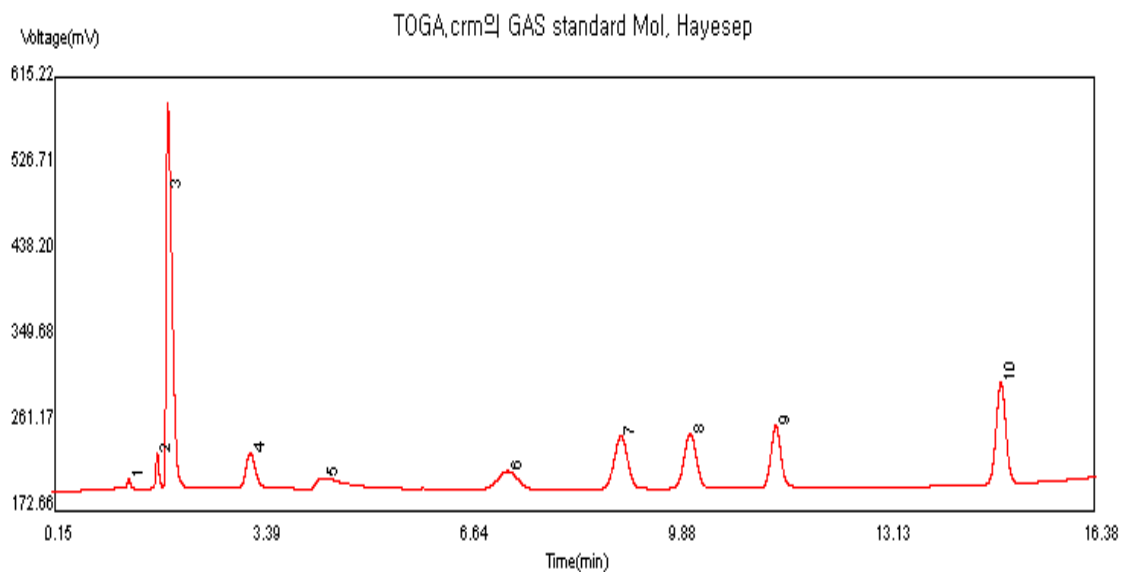




# APPLICATION NOTE

## Subject : Analysis of Gas in TOGA Application

Analysis Condition Table		
Column	Porapak N, 1/8"×10ft, 60/80 mesh	<b>C<sub>2</sub>H<sub>2</sub>, C<sub>2</sub>H<sub>4</sub>, C<sub>2</sub>H<sub>6</sub>, C<sub>3</sub>H<sub>6</sub>(C<sub>3</sub>H<sub>8</sub>)</b>
	Molecular sieve 13X, 1/8", 3ft, 60/80 mesh	<b>H<sub>2</sub>, O<sub>2</sub>, N<sub>2</sub>, CH<sub>4</sub>, CO</b>
Gases	Carrier gas : Ultrapure Ar	15 ml/min ( Valve 1 On, OFF)
	Air	300 ml/min
	H <sub>2</sub>	30 ml/min
	Column Oven	35 ℃(for 5 min,) →15 ℃/min (temperature programming)→175 ℃ (for 10 min,)
Temperature	Packed column injection port	200 ℃
	Methanizer	350 ℃
	Thermal Conductivity Detector(TCD)	200 ℃
	Flame Ionization Detector(FID)	250 ℃
	Gas Sampling Valve (GSV 1)	120 ℃
Automated Valve	Initial	GSV1 Off, GSV 2 Off
	Conversion	0,1 min GSV 1 On, 7 min GSV 2 On
Signal Conversion	APC mode	4,0 min (TCD -> FID)
	AT- 2000 control version	



영린기기

431-836 경기도 안양시 동안구 호계2동 899-6 Tel : 031-428-8700 Fax : 031-428-8787  
Homepage : [www.younglin.com](http://www.younglin.com) E-mail : [sales@younglin.com](mailto:sales@younglin.com)