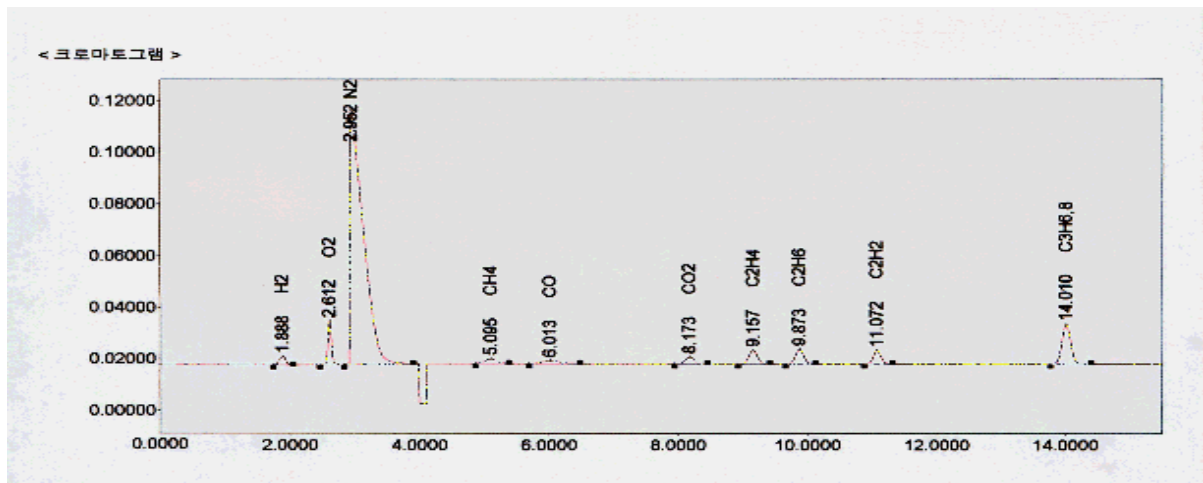


APPLICATION NOTE

Subject : Analysis of Standard Sample Gas
by Young Lin Permanent Gases Analyzer

<Analysis Condition>

Sample Injection	Gas sampling Valve (120 °C)- 250 ul
Column 1	Porapak N 1/8 " * 10 ft, 60/80 mesh
Column 2	Molecular seive 13X 1/8 " * 3 ft, 60/80 mesh ; Allow a Column 1 using valve system 7 minutes after the analysis.
Carrier gas	Ultrapure Ar, 15 ml/min
FID gas	Air 300 ml/min, H2 30ml/min
Temp.	Column Oven: 35 °C(5 min)- > 15 °C/min- > 175 °C(10 min) Methanizer : 350 °C TCD : 200 °C FID : 200 °C
Valve	Initial - GSV off, GSV2 off Conversion - 0.1 min GSV 1 On, 7 min GSV 2 On
Signal Conversion	APC mode 4.0 min (TCD- - >FID) In use with AT- 2000



<Fig 1. Analysis of Standard sample gas>



영린기기

431-836 경기도 안양시 동안구 호계2동 899-6 Tel : 031-428-8700 Fax : 031-428-8787
Homepage : www.younglin.com E-mail : sales@younglin.com